

BRIGHTSIGN NETWORK

Subscription-based Hosted Digital Signage Network with New Web-based User Interface and User Permissions

BrightSign Network is an affordable and scalable subscription-based hosted service, providing the complete infrastructure to serve and support your digital signage network. It makes delivering remote content to one or many units a breeze, and frees you from the complexities of hosting and maintaining your own network.

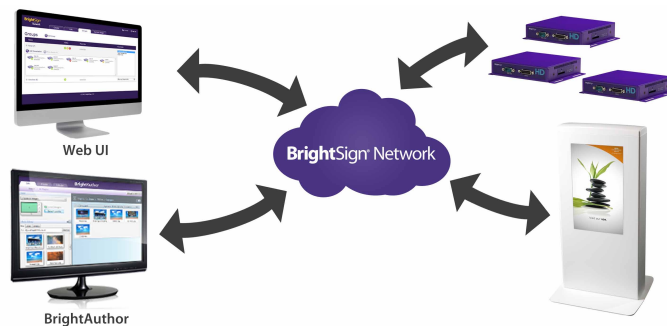
BrightSign Network provides you with the tools and interface to:

- distribute presentations
- monitor the activity and status of displays
- assign user roles and permissions from a remote location
- perform network administrator functions
- manage networked players

Access via BrightAuthor and the BrightSign Network Web UI

BrightSign Network capabilities are user-accessible through two free applications: BrightAuthor free PC software application and the recently announced web-based user interface – the BrightSign Network Web UI.

Web UI	BrightAuthor
Web-based user interface – accessible from any Internet connected PC or Mac – provides user assigned access to your BrightSign Network allowing you to create user accounts, set user roles and permissions, manage and monitor networked units, and perform basic presentation creation, scheduling and publishing functions.	PC-based software application that provides BrightSign Network users access to network management and monitoring capabilities based on user assigned permissions as well as full access to presentation creation features, presentation publishing and scheduling.



BrightSign Network Features

Secure, Scalable Hosted Service

- Delivers the complete infrastructure to serve, manage and support your digital signage network
- Frees you from the complexities of hosting and maintaining your own network
- Provides strong, reliable security using standard web technologies
- Scalable service, ideal for any size network

Network Monitoring Only Solution

- Optional BrightSign Network solution that provides view-only access to your network health and restricts content updates
- Monitor networked unit activity and status of displays
- Purchase content updates as needed

Flexible Remote Access

- Manage your BrightSign Network remotely with BrightAuthor or the Web UI
- Permission-based, secure logon automatically configures user interface based on assigned role

BrightSign Network Enterprise Edition

- Installable software version of BrightSign Network for private network support
- Host your own network and gain access to all the features of BrightSign Network
- Sell subscriptions for use of your hosted network
- Manage your network within the security of your own server and firewall
- Recommended for customers with special hosting requirements, advanced technical skill and a dedicated IT staff

BrightSign Network's Web UI

The BrightSign Network Web UI provides access to your BrightSign Network subscription from anywhere in the world using a simple Internet connection. Through the Web UI, network administrators can create user accounts, assign roles and set account permissions. Account users can remotely access features based on their assigned roles to perform network monitoring and management, generate playback, event and diagnostic reports, as well as author and edit simple presentations.

Web UI Features

Access Displays Anywhere, Anytime

- Direct access to networked units from any Internet connected PC or Mac computer
- Schedule, publish and monitor network activity remotely from your PC or Mac

Flexible Account Administration

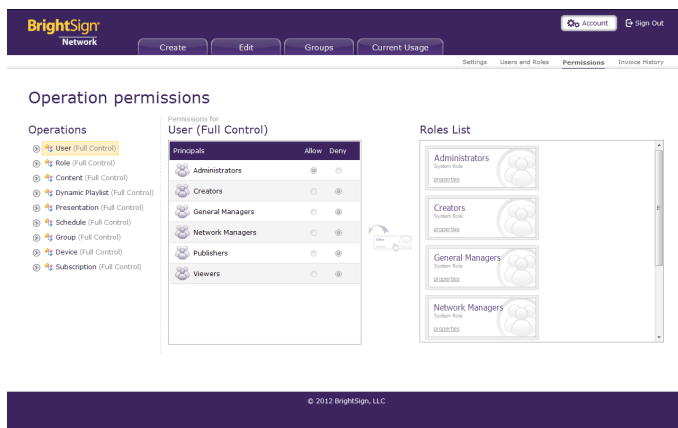
- Create user accounts to support, manage and administer your BrightSign Network
- Assign roles to users that give permission to access and operate specific network and authoring functions
- Permission-based, secure logon automatically configures user interface based on assigned roles of:
 - Administrators
 - General Managers
 - Publishers
 - Network Managers
 - Creators
 - Viewers

Network Management and Reporting

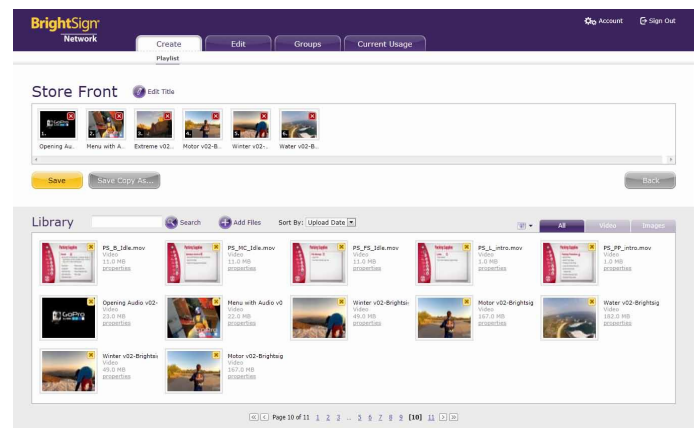
- Monitor activity status and network health of all units in your BrightSign Network
- Create, manage and monitor network groups
- Send firmware updates to remote units
- Utilize fail-safe features such as network auto-recovery mode and corrupt card detection
- Generate reports to measure presentation usage and success based on playback, events, status and diagnostic data logs

Basic Presentation Creation

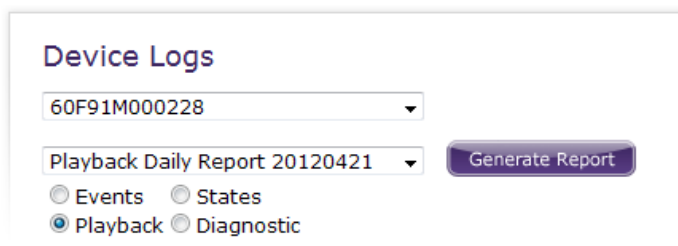
- Edit presentation properties and preferences
- Create single-zone looping and dynamic playlists
- Publish and schedule presentations to networked units
- Manage and maintain a networked content library



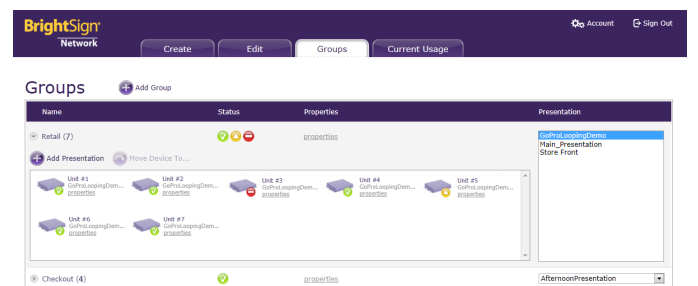
Set user roles and permissions



Create and schedule basic presentations



Generate reports



Manage and monitor your network and library content

BrightSign Network's BrightAuthor Interface

BrightAuthor provides BrightSign Network subscribers with access to network management and monitoring capabilities based on user assigned permissions. It also provides full access to all presentation creation features and presentation scheduling and publishing capabilities.

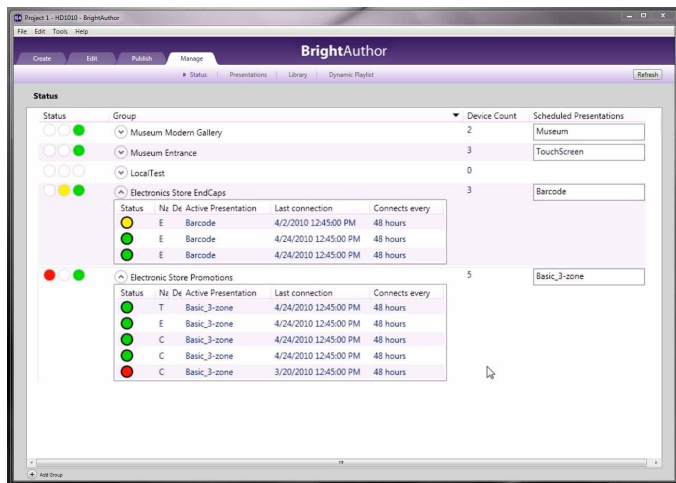
BrightAuthor Features

Secure Network Management

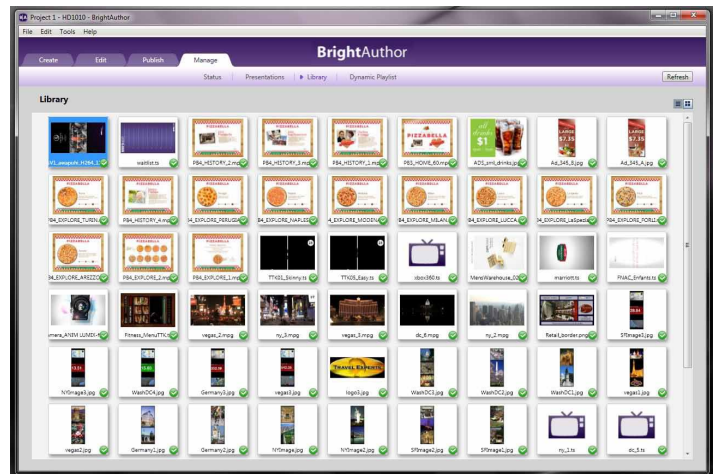
- Permission-based, secure logon automatically configures user interface based on assigned roles
- Setup networked BrightSign units
- Manage and maintain a networked content library
- Monitor activity status and network health of all units in your BrightSign Network
- Create, manage and monitor network groups
- Send firmware updates to remote units
- Utilize fail-safe features such as network auto-recovery mode and corrupt card detection

Full Presentation Creation

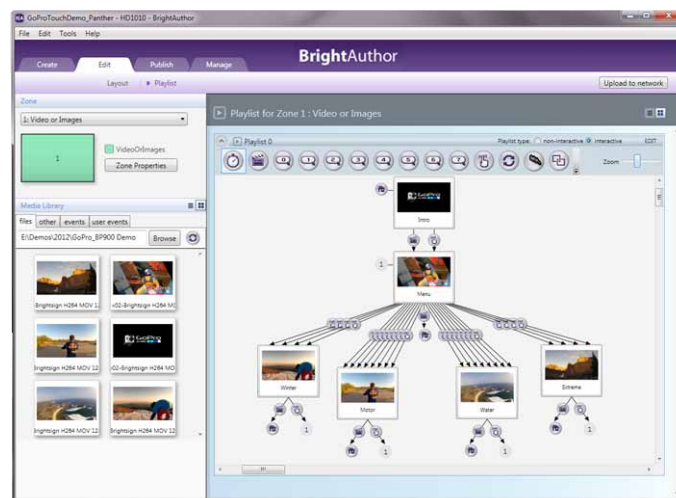
- Edit presentation properties and preferences
- Create single and multi-zone presentations
- Build looping, interactive and dynamic playlists
- Schedule presentations using a visual-based calendar tool
- Add Live Text, RSS feeds, Twitter and tickers to presentations
- Create synchronized presentations for video wall applications
- Publish presentations to networked units and groups



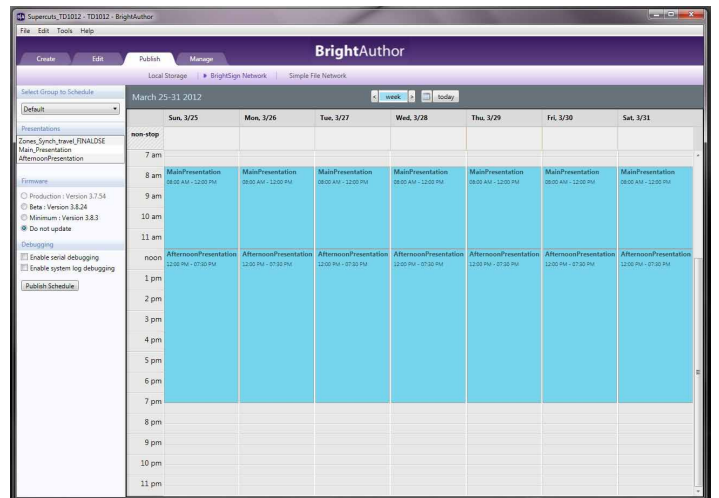
Manage and monitor your network



Manage your content library



Create basic and advanced presentations



Schedule and publish presentations

Feature Accessibility Matrix

Feature	Functions	Web UI	BrightAuthor
BrightSign Network Account Administration	Create New Account Users	X	
	Assign User Roles and Permissions	X	
	View Invoice History	X	
	Administer BrightSign Network Account	X	
BrightSign Network Management	Secure logon with permission-based access to assigned operational permissions	X	X
	Set Up New Devices		X
	Monitor activity status and network health of all units in your BrightSign Network	X	X
	Create, Manage and Monitor Network Groups	X	X
	View Usage Tracking Statistics	X	
	Generate reporting based on events, playback, states and diagnostics	X	
	Deliver Firmware Updates to Remote Units	X	X
Presentation Authoring	Utilize fail-safe features such as network auto-recovery mode and corrupt card detection	X	X
	Content Library Management	X	X
	Upload content to library that's not assigned to a presentation	X	
	Edit Presentation Properties and Preferences	X	X
	Create Looping Playlists	X	X
	Create Multi-zone and Interactive Presentations		X
	Create Dynamic Playlists	X	X
	Add Dynamic Playlists to a Presentation	X	X
	Add Live Text to Presentations		X
	Add Text Ticker Feed and Subtitles		X
	Add RSS Media and Twitter Feeds		X
	Add Synchronization and Zone Messaging		X
	Add Lists, Event Handlers, Interactive Menus, Play Files, and User Defined Events to Presentations		X
	Set BrightControls (CEC Controls via HDMI)		X
Compatibility	Playback Scheduling and Day-Parting	X	X
	Presentation Publishing	X	X
	BrightSign Network Monitoring Only Subscription	X	X
	BrightSign Network Enterprise Edition	X	X
	Runs on a Macintosh	X	
	Runs on a PC	X	X